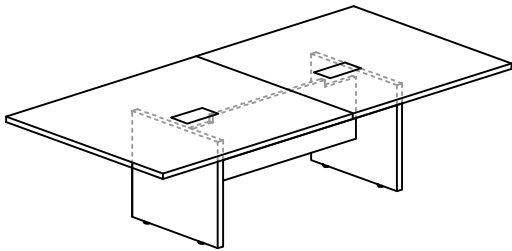


ASSEMBLY INSTRUCTIONS MODEL: PL 437T HALF

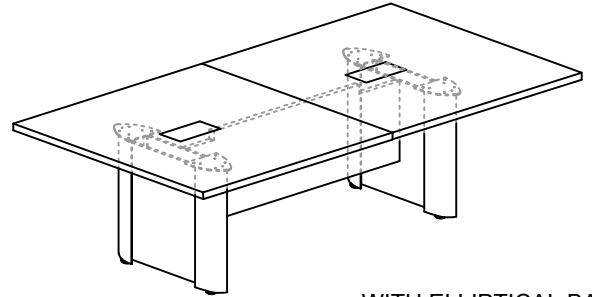
Before assembly, please remove all parts from carton, verifying that you have the correct quantities, and read all the instructions.

IN THE CARTON:



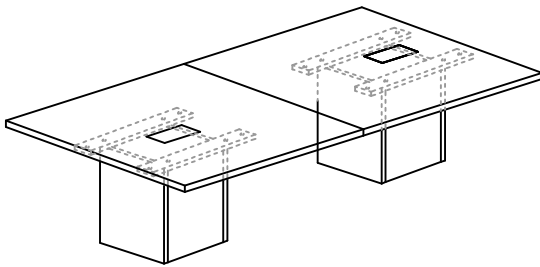
See Page 3

WITH END BASE



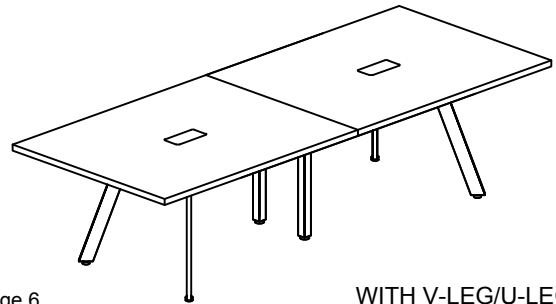
See Page 4

WITH ELLIPTICAL BASE



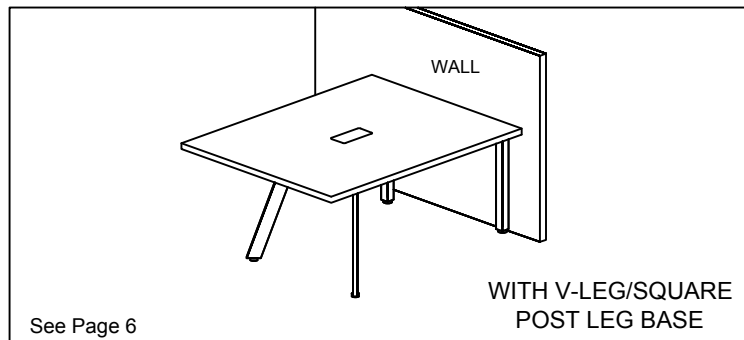
See Page 5

WITH CUBED BASE



See Page 6

WITH V-LEG/U-LEG BASE

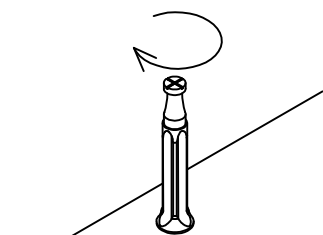


See Page 6

WITH V-LEG/SQUARE
POST LEG BASE

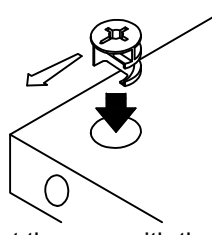
KLIX CAM INSTRUCTIONS

1



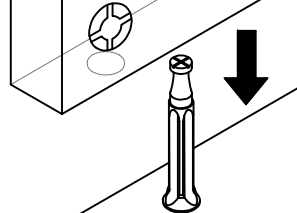
Line up Cam Lock,
turn clockwise.

2



Insert the cam with the arrow
pointing towards the hole in the
edge.

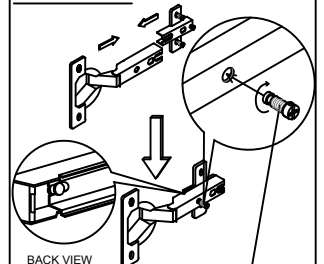
3



Insert the Cam Lock into Klix
Cam. Turn Klix Cam to lock.

HINGES INSTRUCTIONS

DETAIL x-x



BACK VIEW

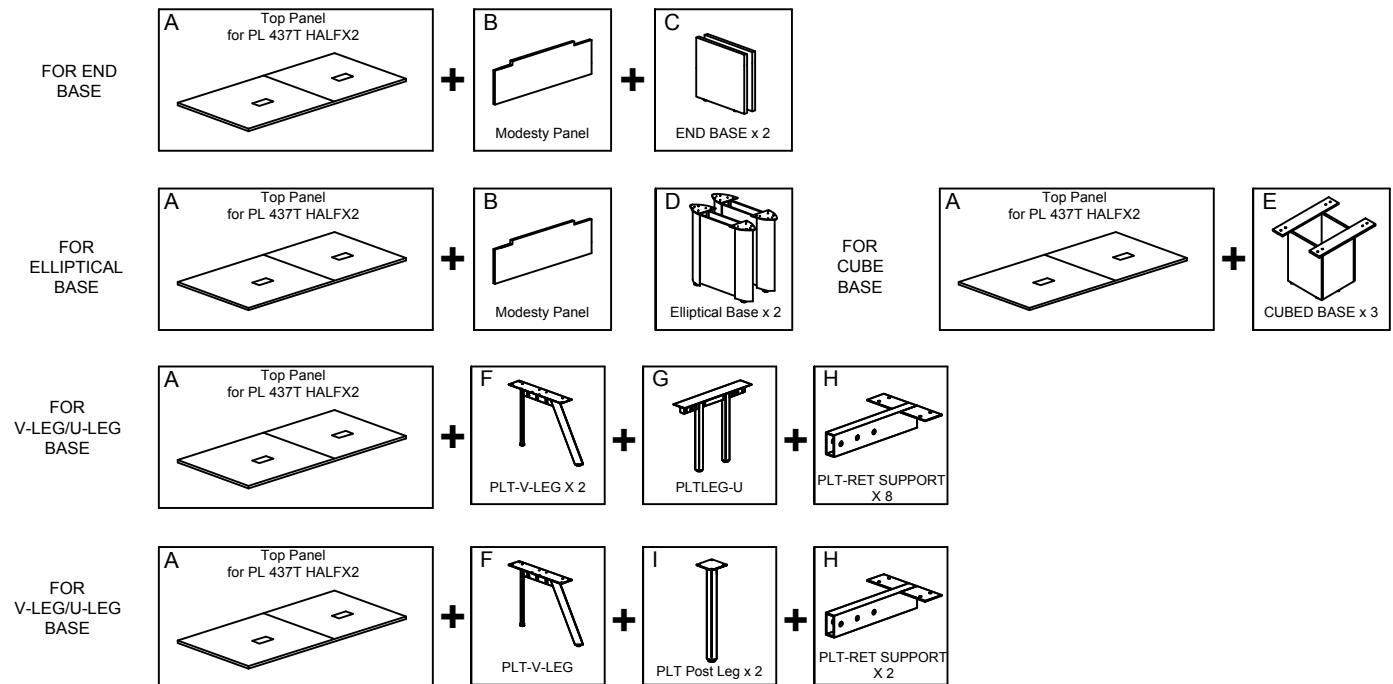
ADJUST THIS SCREW FOR DOOR ALIGNMENT
AFTER ASSEMBLY THE HINGES.

ASSEMBLY INSTRUCTIONS MODEL: PL 437T HALF

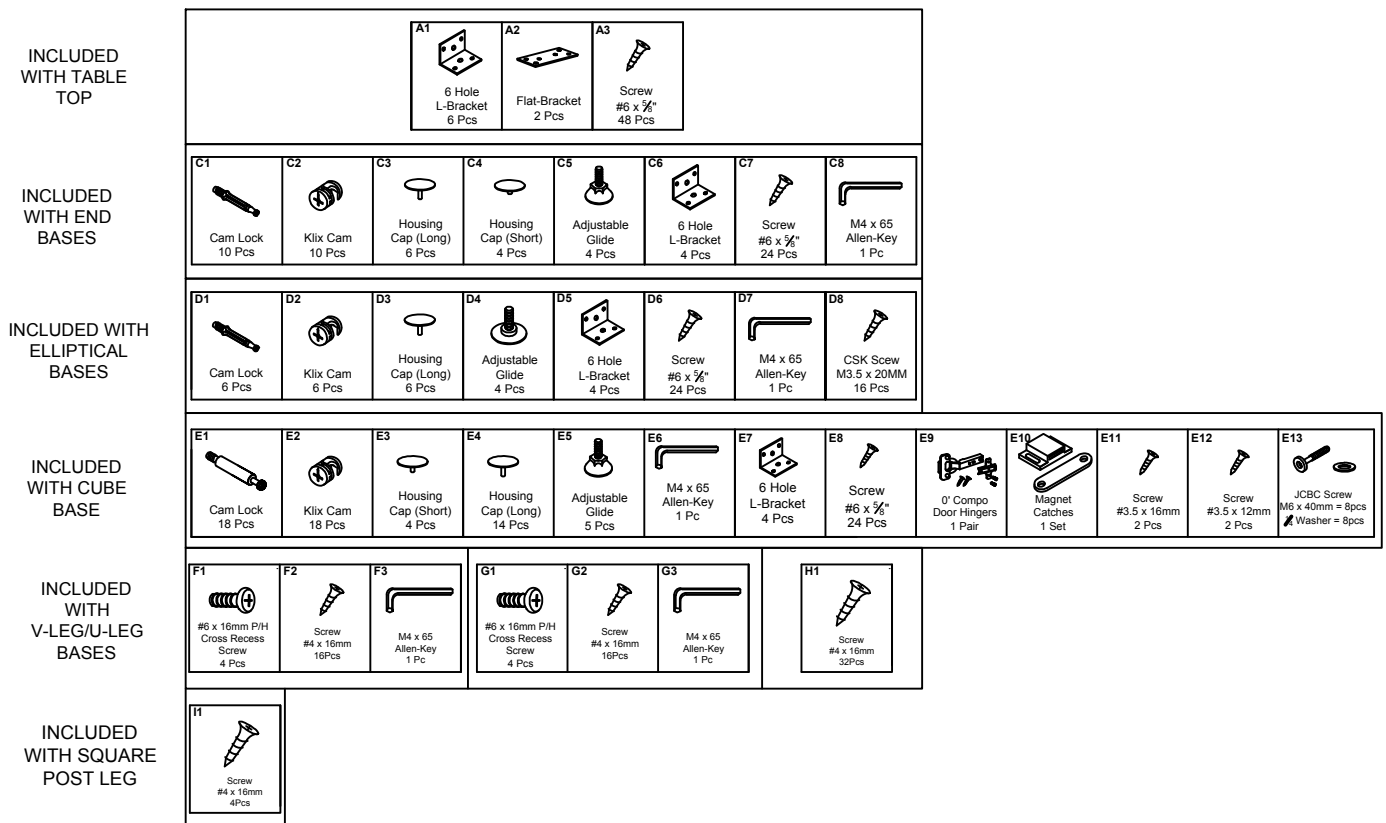


PERFORMANCE
FURNISHINGS

COMPONENTS:



HARDWARE:

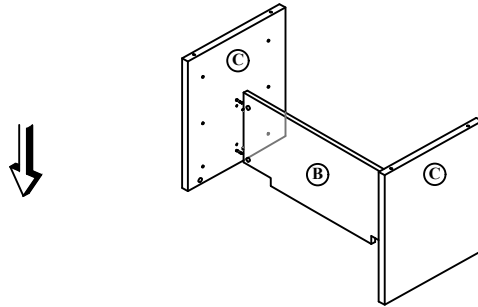


Place all wooden parts on a clean, smooth surface to prevent them from being scratched.

Check to be sure that you have all parts and hardware. Remove all wrapping materials, including staples and packing straps before you start to assemble. Do not tighten all screws/bolts until all completely assembled. Keep all hardware parts out of reach of children. If any parts are missing, broken, damaged or worn, stop use of product until repairs have been made using factory authorized parts. Failure to follow these warnings may result in injury.

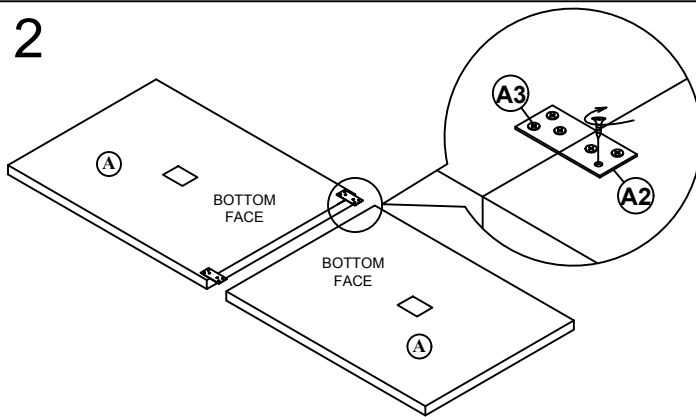
INSTRUCTION:ASSEMBLING TABLE WITH END PANEL BASE

1



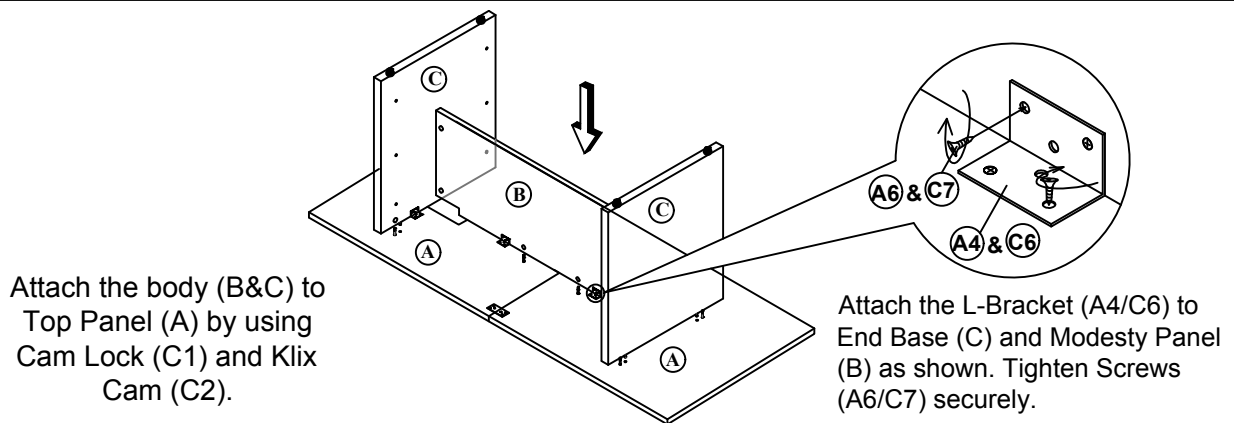
Attach the two End Base (C) to Modesty Panel (B) by using Cam Lock (C1) and Klix Cam (C2).

2



Attach the Flat-Bracket (A2) to two Top Panel (A) as shown. Tighten Screws (A3) securely.

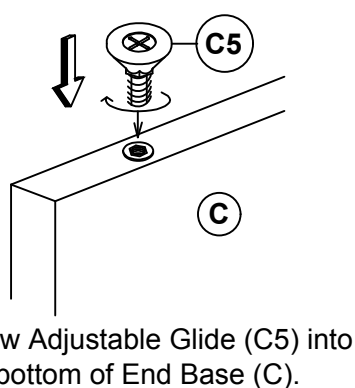
3



Attach the body (B&C) to Top Panel (A) by using Cam Lock (C1) and Klix Cam (C2).

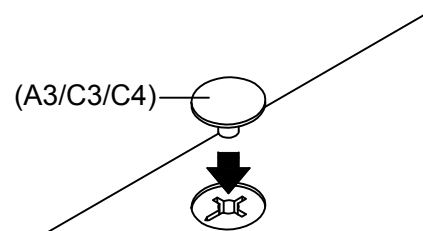
Attach the L-Bracket (A4/C6) to End Base (C) and Modesty Panel (B) as shown. Tighten Screws (A6/C7) securely.

4



Screw Adjustable Glide (C5) into bottom of End Base (C).

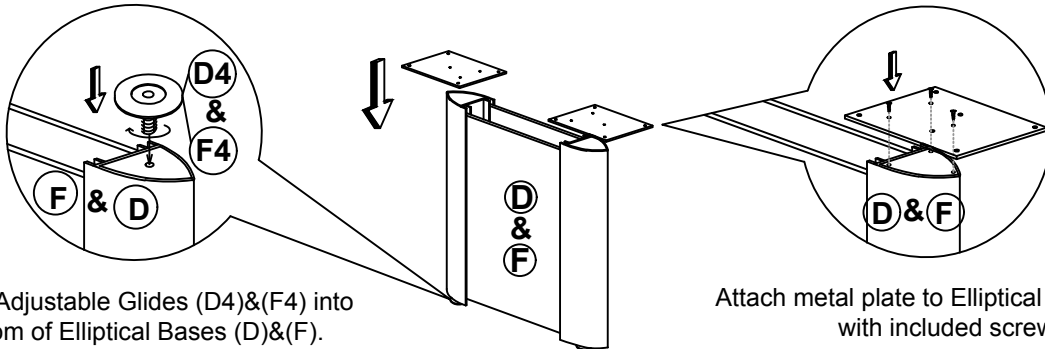
5



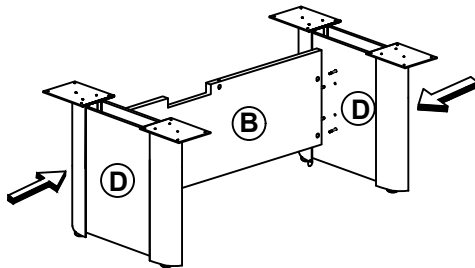
Attach Housing Cap (A3/C3/C4) to all Klix Cam (A2/C2) by pushing neck through center of cam.

INSTRUCTION: ASSEMBLING TABLE WITH ELLIPTICAL BASE

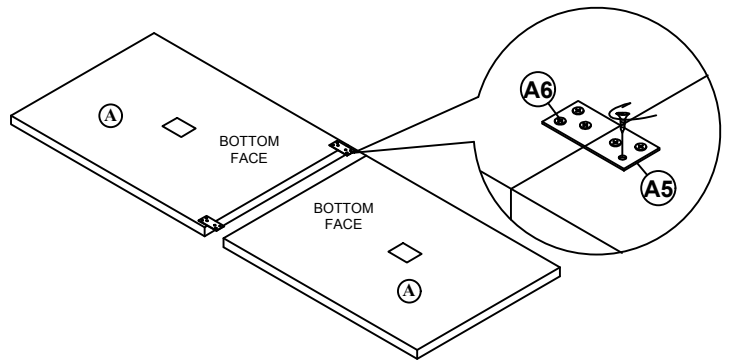
1



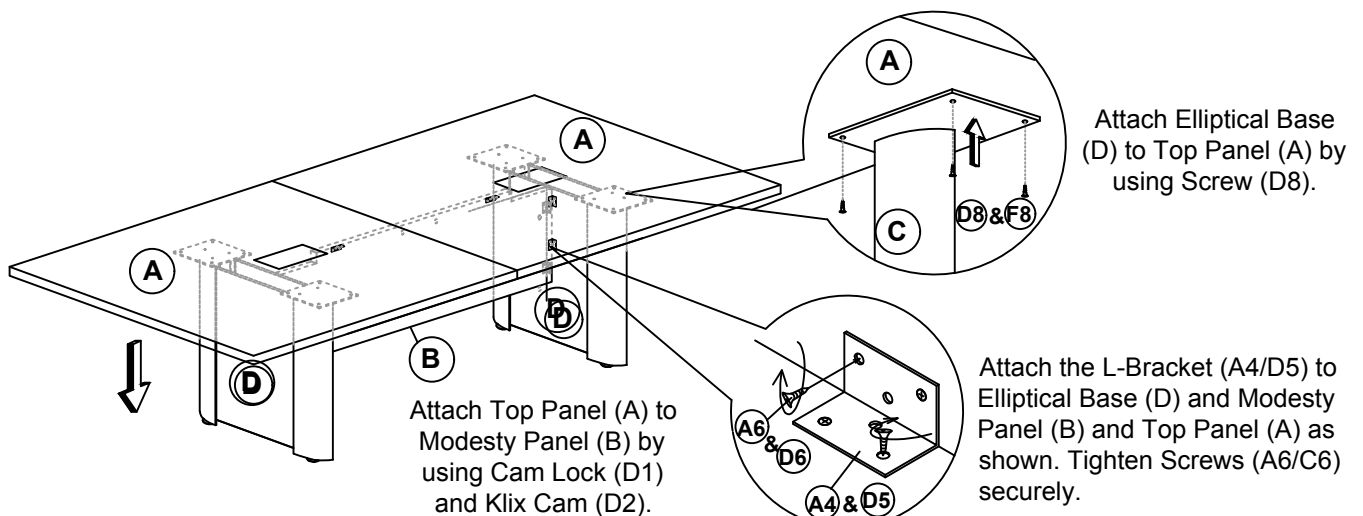
2



3 Attach the Flat-Bracket (A5) to two Top Panel (A) as shown. Tighten Screws (A6) securely.

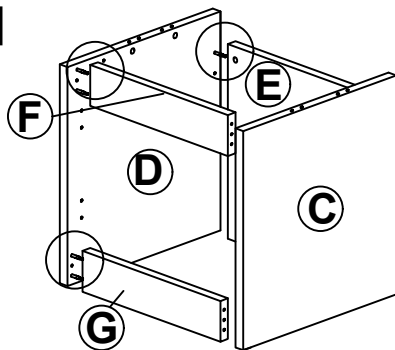


4



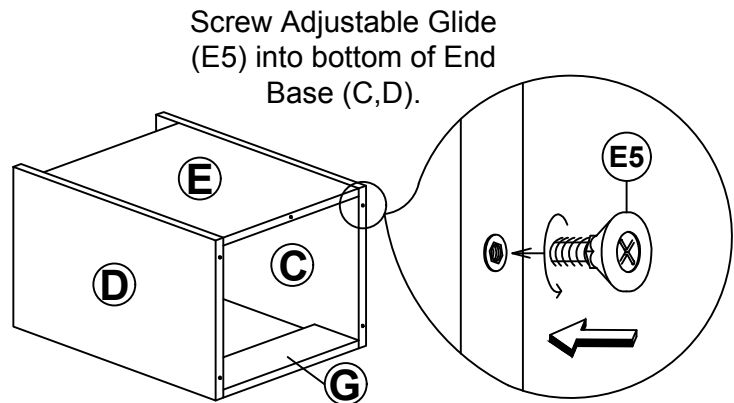
INSTRUCTION:ASSEMBLING TABLE WITH CUBED BASE

1



Assemble Cube Base by attaching Side Panels(C)&(D) to Back Panels(E),Top rail(F) & Bottom Rail(G) with Cam Lock (E1) and Klix Cam (E2).

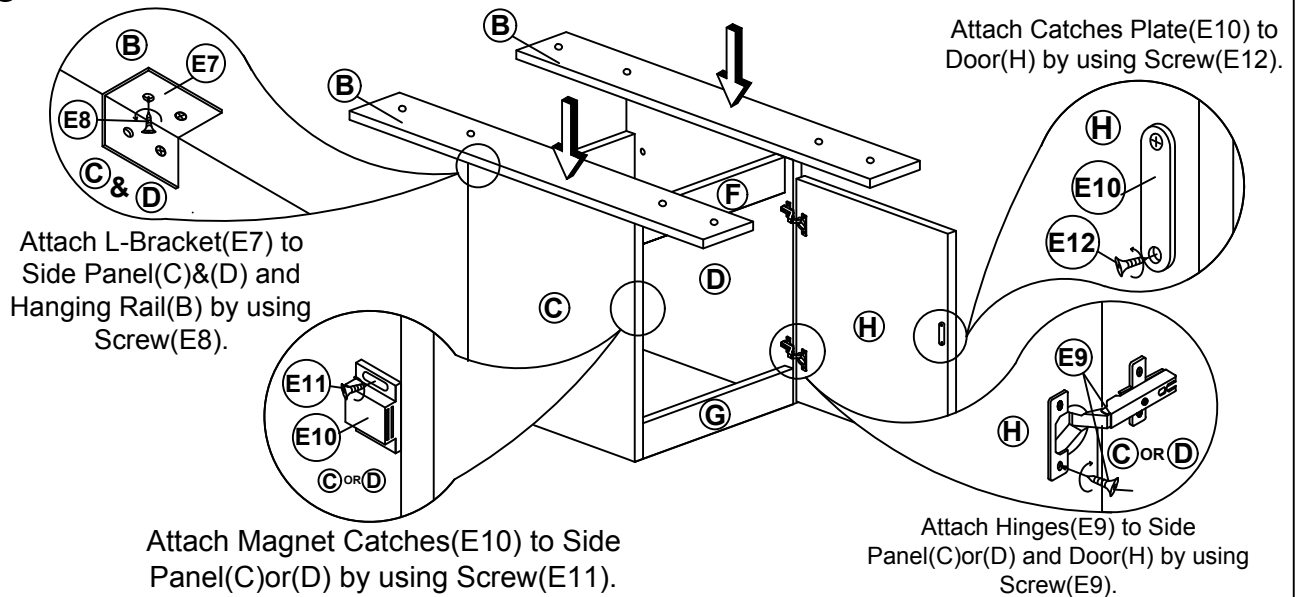
2



Screw Adjustable Glide (E5) into bottom of End Base (C,D).

3

Attach Cube Base Support (B) by using Cam Lock (D1) and Klix Cam (D2).



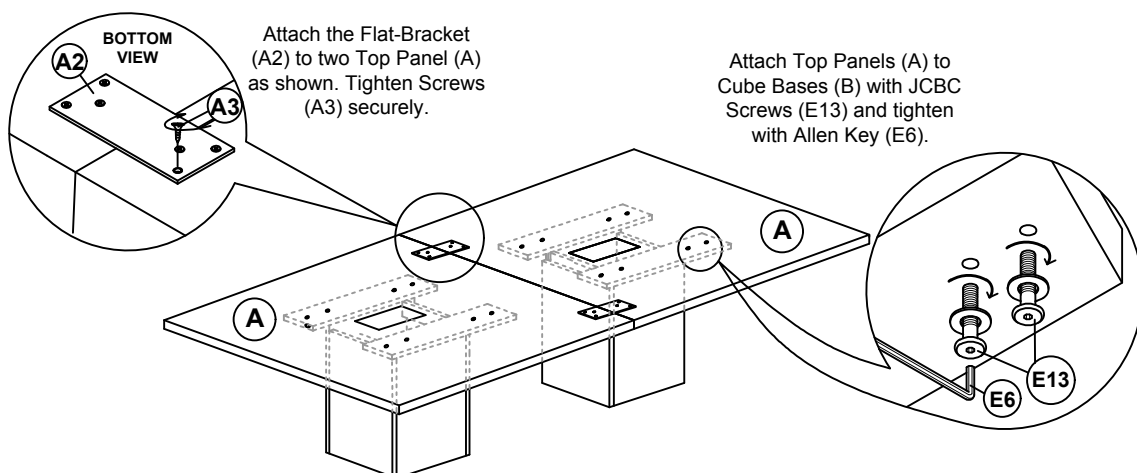
Attach L-Bracket(E7) to Side Panel(C)&(D) and Hanging Rail(B) by using Screw(E8).

Attach Catches Plate(E10) to Door(H) by using Screw(E12).

Attach Magnet Catches(E10) to Side Panel(C)or(D) by using Screw(E11).

Attach Hinges(E9) to Side Panel(C)or(D) and Door(H) by using Screw(E9).

4

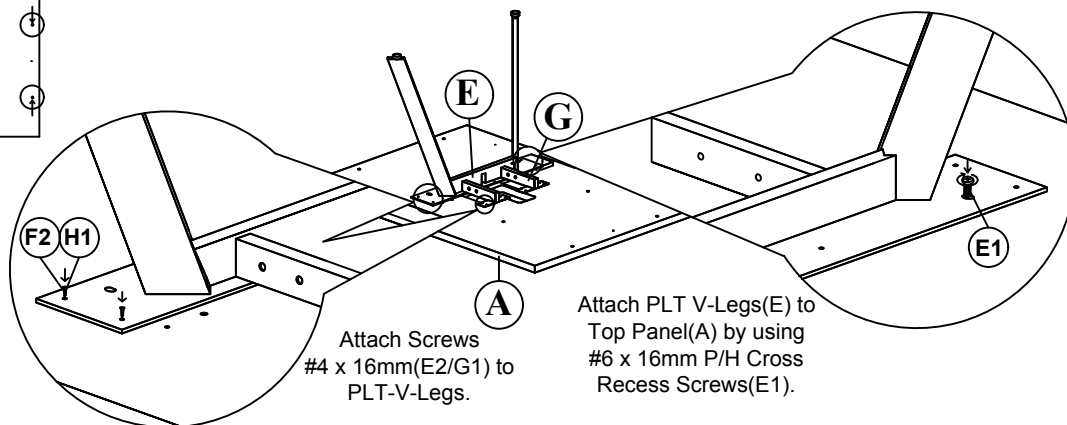
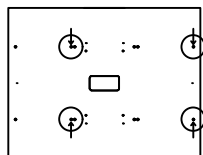


Attach the Flat-Bracket (A2) to two Top Panel (A) as shown. Tighten Screws (A3) securely.

Attach Top Panels (A) to Cube Bases (B) with JCBC Screws (E13) and tighten with Allen Key (E6).

INSTRUCTION: ASSEMBLING TABLE WITH V-LEG BASE

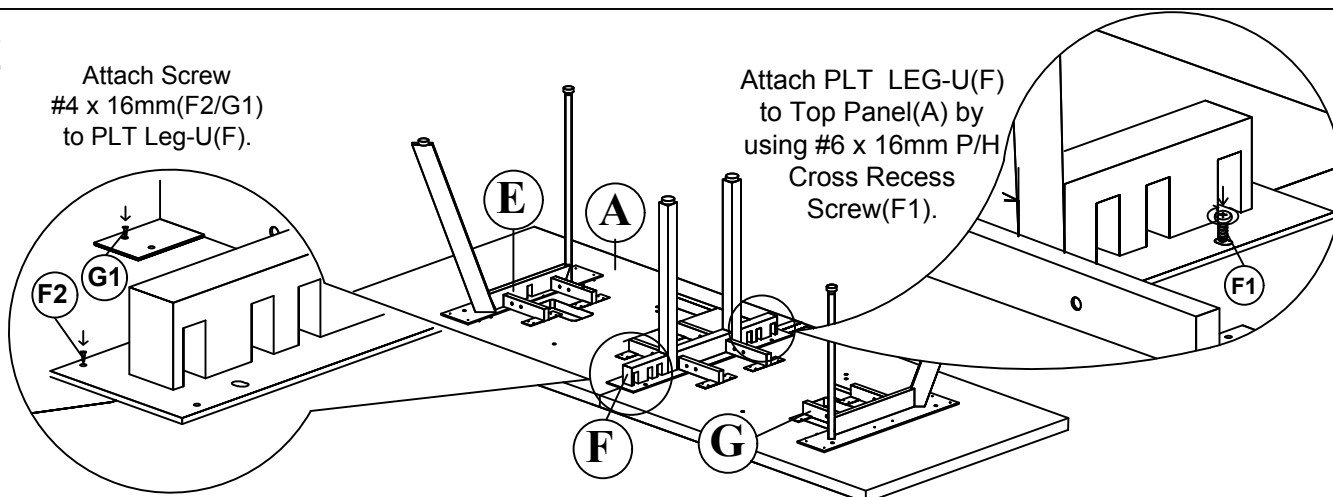
1



2

Attach Screw #4 x 16mm(F2/G1) to PLT Leg-U(F).

Attach PLT LEG-U(F) to Top Panel(A) by using #6 x 16mm P/H Cross Recess Screw(F1).



3

Attach PLT V-Legs(E) to Top Panel(A) by using #6 x 16mm P/H Cross Recess Screws(F1).

Attach Screws #4 x 16mm(H1/F2) to PLT-V-Legs.

Attach PLT Square Post Legs(H) to Top Panel(A) by using screws #4 x 16mm(H1)

